

8IGHT™ / 8IGHT-T™
STARTER BOX

A decorative horizontal band consisting of a series of parallel diagonal lines, slanted from the top-left to the bottom-right, creating a sense of motion or speed.

TLR®

TEAM LOSI RACING

NOTICE

All instructions, warranties and other collateral documents are subject to change at the sole discretion of Horizon Hobby, Inc. For up-to-date product literature, visit horizonhobby.com and click on the support tab for this product.

Meaning of Special Language

The following terms are used throughout the product literature to indicate various levels of potential harm when operating this product:

NOTICE: Procedures, which if not properly followed, create a possibility of physical property damage AND a little or no possibility of injury.

CAUTION: Procedures, which if not properly followed, create the probability of physical property damage AND a possibility of serious injury.

WARNING: Procedures, which if not properly followed, create the probability of property damage, collateral damage, and serious injury OR create a high probability of superficial injury.



WARNING: Read the ENTIRE instruction manual to become familiar with the features of the product before operating. Failure to operate the product correctly can result in damage to the product, personal property and cause serious injury.

This is a sophisticated hobby product. It must be operated with caution and common sense and requires some basic mechanical ability. Failure to operate this Product in a safe and responsible manner could result in injury or damage to the product or other property. This product is not intended for use by children without direct adult supervision. Do not attempt disassembly, use with incompatible components or augment product in any way without the approval of Horizon Hobby, Inc. This manual contains instructions for safety, operation and maintenance. It is essential to read and follow all the instructions and warnings in the manual, prior to assembly, setup or use, in order to operate correctly and avoid damage or serious injury.

Age Recommendation: Not for children under 14 years. This is not a toy.

Recommended Battery Packs

(2)-DYN1070EC Speedpack™ 3300mAh Ni-MH 6-Cell Flat with EC3™ Connector

(2)- DYN5202EC Speedpack Silver 7.4V 5000mAh 2S 20C LiPo Case: EC3 Connector

Powering the Starter Box

You have two battery options to power your 8IGHT™ 2.0 starter box. You can use (2) 7.2V NiMH or (2) 7.4V LiPo battery packs (not included). Pre-assembled wiring harnesses and mounting fixtures for both of these power source options are included. Start by moving the rear chassis fixture to the forward (Buggy) position and remove the two small Phillips head screws on the top of the box as shown in Figure 1.

On each side of the box there are two screws (figure 2) that hold the center battery mount in place. Remove these two screws on each side of the starter box for a total of four screws. This will loosen the center battery mount. The 7.2V NiMH battery will fit into the plastic mounts on the rear of the battery box snugly. If you select 7.4V LiPo battery packs, secure them to the plate using two nylon ties. Slide the wires through the center battery mount and fit the center battery mount over each battery. Now screw all four screws back into place to secure the batteries.

By using the charger of your choice, follow the manufacturers' directions to charge both batteries.

If you are using a LiPo battery as your power source and you notice the battery power diminishing, stop immediately and recharge your battery.



Fig. 1



Fig. 2



Fig. 3

⚠ CAUTION: Always ensure that you do not discharge the battery beyond 3.7V per cell. Batteries discharged to a voltage lower than the lowest approved voltage may become damaged, resulting in loss of performance and potential fire when batteries are charged.

Adjusting the Chassis Fixtures

The Team Losi Racing™ 8IGHT™/8IGHT-T™ Starter box accommodates both the 8IGHT 2.0, and 8IGHT-T 2.0, even though the vehicles have different chassis lengths. This is done by the front and rear chassis fixture. For the buggy, rotate the front fixture with the “V” pointing toward the end of the starter box. Depress the lock button on the rear chassis fixture and move it towards the center of the starter box (short position) as shown in Figure 4.

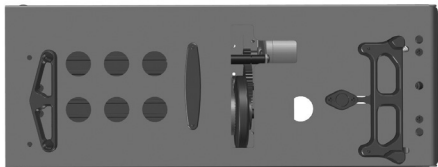


Fig. 4

For the 8IGHT-T 2.0 Truggy location, rotate the front fixture with the “V” pointing towards the center of the starter box. Depress the lock button on the rear fixture and push it to the end of the starter box (long position) as shown in Figure 5.

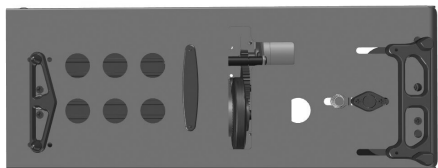


Fig. 5

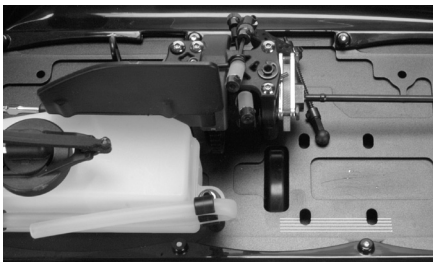


Fig. 6

Starting the Vehicle

Place the chassis on the starter box, ensuring the flywheel is centered on the starter wheel (Figure 6). Turn the power switch to the “ON” position (Figure 7). Press down on the rear of the chassis to engage the starter box wheel to the flywheel. After the engine starts, release the chassis. The vehicle will be able to sit on the starter box fixtures and idle without interference. If the engine is new, tight, or flooded, it may be necessary to loosen the glow plug 2–3 turns to get the engine to turn over. Retighten the glow plug after the engine starts to turn over. Do not continue to stall the starter box motor or allow the rubber wheel to grind on the flywheel of the engine. This will only decrease the life of your starter box motor and rubber wheel.

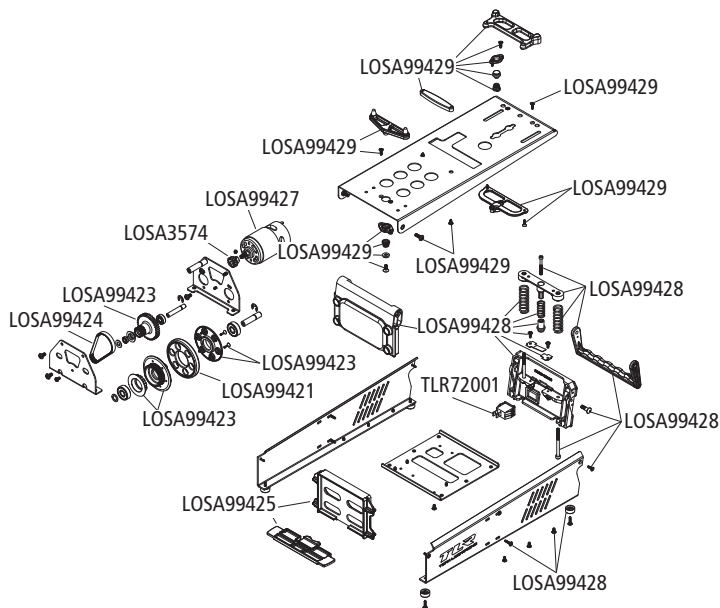


Fig. 7

Problem	Solution
Motor runs slow	Battery(s) needs to be recharged
Starter wheel won't turn over engine	Loosen glow plug
	Add a few drops of fuel into carburetor
	Check for excessive wear on starter wheel

Replacement Parts

Part #	Description
LOSA3574	1.0 Module Pitch Pinion, 14T
LOSA99421	Starter Wheel: 8B/8T 2.0
LOSA99423	Starter Wheel Pulley Set: 8B/8T 2.0
LOSA99424	Starter Drive Belt: 8B/8T 2.0
LOSA99425	Starter Battery Mounting Plate Set: 8B/8T 2.0
TLR72001	Starter Switch & Wire Hardware, EC3: 8B/T 2.0
LOSA99427	Starter 775 Motor: 8B/8T 2.0
LOSA99428	Starter End Plates & Handle: 8B/8T 2.0
LOSA99429	Starter Chassis Fixture Set: 8B/8T 2.0



Limited Warranty

What this Warranty Covers

Horizon Hobby, Inc. ("Horizon") warrants to the original purchaser that the product purchased (the "Product") will be free from defects in materials and workmanship at the date of purchase.

What is Not Covered

This warranty is not transferable and does not cover (i) cosmetic damage, (ii) damage due to acts of God, accident, misuse, abuse, negligence, commercial use, or due to improper use, installation, operation or maintenance, (iii) modification of or to any part of the Product, (iv) attempted service by anyone other than a Horizon Hobby authorized service center, (v) Product not purchased from an authorized Horizon dealer, or (vi) Product not compliant with applicable technical regulations.

OTHER THAN THE EXPRESS WARRANTY ABOVE, HORIZON MAKES NO OTHER WARRANTY OR REPRESENTATION, AND HEREBY DISCLAIMS ANY AND ALL IMPLIED WARRANTIES, INCLUDING, WITHOUT LIMITATION, THE IMPLIED WARRANTIES OF NON-INFRINGEMENT, MERCHANTABILITY AND FITNESS FOR A PARTICULAR PURPOSE. THE PURCHASER ACKNOWLEDGES THAT THEY ALONE HAVE DETERMINED THAT THE PRODUCT WILL SUITABLY MEET THE REQUIREMENTS OF THE PURCHASER'S INTENDED USE.

Purchaser's Remedy

Horizon's sole obligation and purchaser's sole and exclusive remedy shall be that Horizon will, at its option, either (i) service, or (ii) replace, any Product determined by Horizon to be defective. Horizon reserves the right to inspect any and all Product(s) involved in a warranty claim. Service or replacement decisions are at the sole discretion of Horizon. Proof of purchase is required for all warranty claims. SERVICE OR REPLACEMENT AS PROVIDED UNDER THIS WARRANTY IS THE PURCHASER'S SOLE AND EXCLUSIVE REMEDY.

Limitation of Liability

HORIZON SHALL NOT BE LIABLE FOR SPECIAL, INDIRECT, INCIDENTAL OR CONSEQUENTIAL DAMAGES, LOSS OF PROFITS OR PRODUCTION OR COMMERCIAL LOSS IN ANY WAY, REGARDLESS OF WHETHER SUCH CLAIM IS BASED IN CONTRACT, WARRANTY, TORT, NEGLIGENCE, STRICT LIABILITY OR ANY OTHER THEORY OF LIABILITY, EVEN IF HORIZON HAS BEEN ADVISED OF THE POSSIBILITY OF SUCH DAMAGES. Further, in no event shall the liability of Horizon exceed the individual price of the Product on which liability is asserted. As Horizon has no control over use, setup, final assembly, modification or misuse, no liability shall be assumed nor accepted for any resulting damage or injury. By the act of use, setup or assembly, the user accepts all resulting liability. If you as the purchaser or user are not prepared to accept the liability associated with the use of the Product, purchaser is advised to return the Product immediately in new and unused condition to the place of purchase.

Law

These terms are governed by Illinois law (without regard to conflict of law principals). This warranty gives you specific legal rights, and you may also have other rights which vary from state to state. Horizon reserves the right to change or modify this warranty at any time without notice.

WARRANTY SERVICES

Questions, Assistance, and Services

Your local hobby store and/or place of purchase cannot provide warranty support or service. Once assembly, setup or use of the Product has been started, you must contact your local distributor or Horizon directly. This will enable Horizon to better answer your questions and service you in the

event that you may need any assistance. For questions or assistance, please visit our website at www.horizonhobby.com, submit a Product Support Inquiry, or call 877.504.0233 toll free to speak to a Product Support representative.

Inspection or Services

If this Product needs to be inspected or serviced and is compliant in the country you live and use the Product in, please use the Horizon Online Service Request submission process found on our website or call Horizon to obtain a Return Merchandise Authorization (RMA) number. Pack the Product securely using a shipping carton. Please note that original boxes may be included, but are not designed to withstand the rigors of shipping without additional protection. Ship via a carrier that provides tracking and insurance for lost or damaged parcels, as Horizon is not responsible for merchandise until it arrives and is accepted at our facility. An Online Service Request is available at http://www.horizonhobby.com/content/_service-center_render-service-center. If you do not have internet access, please contact Horizon Product Support to obtain a RMA number along with instructions for submitting your product for service. When calling Horizon, you will be asked to provide your complete name, street address, email address and phone number where you can be reached during business hours. When sending product into Horizon, please include your RMA number, a list of the included items, and a brief summary of the problem. A copy of your original sales receipt must be included for warranty consideration. Be sure your name, address, and RMA number are clearly written on the outside of the shipping carton.

NOTICE: Do not ship LiPo batteries to Horizon. If you have any issue with a LiPo battery, please contact the appropriate Horizon Product Support office.

Warranty Requirements

For Warranty consideration, you must include your original sales receipt verifying the proof-of-purchase date. Provided warranty conditions have been met, your Product will be serviced or replaced free of charge. Service or replacement decisions are at the sole discretion of Horizon.

Non-Warranty Service

Should your service not be covered by warranty, service will be completed and payment will be required without notification or estimate of the expense unless the expense exceeds 50% of the retail purchase cost. By submitting the item for service you are agreeing to payment of the service without notification. Service estimates are available upon request. You must include this request with your item submitted for service. Non-warranty service estimates will be billed a minimum of ½ hour of labor. In addition you will be billed for return freight. Horizon accepts money orders and cashier's checks, as well as Visa, MasterCard, American Express, and Discover cards. By submitting any item to Horizon for service, you are agreeing to Horizon's Terms and Conditions found on our website http://www.horizonhobby.com/content/_service-center_render-service-center.

ATTENTION: Horizon service is limited to Product compliant in the country of use and ownership. If received, a non-compliant Product will not be serviced. Further, the sender will be responsible for arranging return shipment of the un-serviced Product, through a carrier of the sender's choice and at the sender's expense. Horizon will hold non-compliant Product for a period of 60 days from notification, after which it will be discarded.

Contact Information

Country of Purchase	Horizon Hobby	Address	Phone Number/Email Address
United States of America	Horizon Product Support	4105 Fieldstone Rd Champaign, Illinois 61822 USA	877-504-0233 productsupport@horizonhobby.com
United Kingdom	Horizon Hobby Limited	Units 1-4 Ployters Rd Staple Tye, Harlow, Essex CM18 7NS, United Kingdom	+44 (0) 1279 641 097 sales@horizonhobby.co.uk
Germany	Horizon Technischer Service	Christian-Junge-Straße 1 25337 Elmshorn Germany	+49 (0) 4121 2655 100 service@horizonhobby.de
France	Horizon Hobby SAS	11 Rue Georges Charpak 77127 Lieusaint, France	+33 (0) 1 60 18 34 90 infofrance@horizonhobby.com
China	Horizon Hobby – China	Room 506, No. 97 Changshou Rd. Shanghai, China, 200060	+86 (021) 5180 9868 info@horizonhobby.com.cn

Compliance Information for the European Union

Declaration of Conformity

(in accordance with ISO/IEC 17050-1)

No. HH2012111903

Product(s): TLR 8IGHT/8IGHT-T 2.0 Starter Box
Item Number(s): TLR99059

The object of declaration described above is in conformity with the requirements of the specifications listed below, following the provisions of the EMC Directive 2004/108/EC:

EN55022:2010 + AC:2011
EN55024:2010



A handwritten signature in black ink that reads "S A Hall".

Signed for and on behalf of:
Horizon Hobby, Inc.
Champaign, IL USA
Nov 19, 2012

Steven A. Hall
Executive Vice President and Chief Operating Officer
International Operations and Risk Management
Horizon Hobby, Inc.

Instructions for disposal of WEEE by users in the European Union

This product must not be disposed of with other waste. Instead, it is the user's responsibility to dispose of their waste equipment by handing it over to a designated collections point for the recycling of waste electrical and electronic equipment. The separate collection and recycling of your waste equipment at the time of disposal will help to conserve natural resources and ensure that it is recycled in a manner that protects human health and the environment. For more information about where you can drop off your waste equipment for recycling, please contact your local city office, your household waste disposal service or where you purchased the product.



TLR[®]
TEAM LOSI RACING

TLRACING.COM

Created 10/12 ©2012 Horizon Hobby, Inc. Losi, Team Losi, TLR, 8IGHT, 8IGHT-T and the Horizon Hobby logo are trademarks or registered trademarks of Horizon Hobby, Inc.
800-0472